



**Accepting  
Applications!**

We offer spacious two, three, and four bedroom apartments that will be sure to meet all your needs. Located in Chubbuck, Idaho, the town has it all—in town entertainment plus great camping and hiking. We have breathtaking views of the surrounding mountains.

Avalon Park offers a large clubhouse with kitchen, basketball court, and large playground. Your apartment home offers spacious rooms, an open floor plan with an updated kitchen that comes with a frost free refrigerator, over the range microwave, dishwasher, and garbage disposal.

Come see your new home today at Avalon Park Apartment today!



**Avalon Park Apartments**  
5265 Mesquite Drive  
Chubbuck, ID 83202  
**P: 208-237-9113**  
**F: 208-237-9367**  
[Avalonpark@somersetpacific.com](mailto:Avalonpark@somersetpacific.com)  
[www.AvalonParkIdaho.com](http://www.AvalonParkIdaho.com)  
[Facebook.com/AvalonParkIdaho](https://www.facebook.com/AvalonParkIdaho)

Somerset Pacific  
Presents



**Avalon Park  
Apartments  
Affordable Living**

**Luxury Living at  
Affordable Prices**



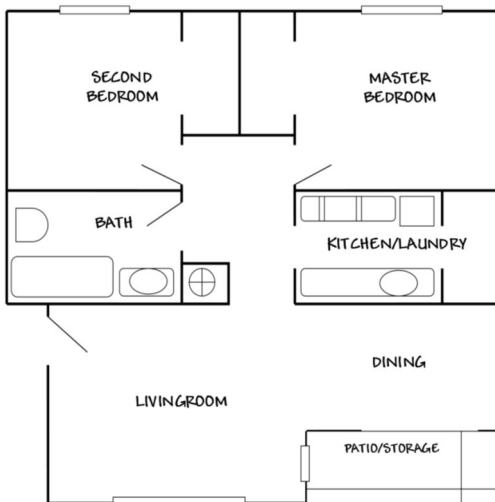
*Avalon Park*



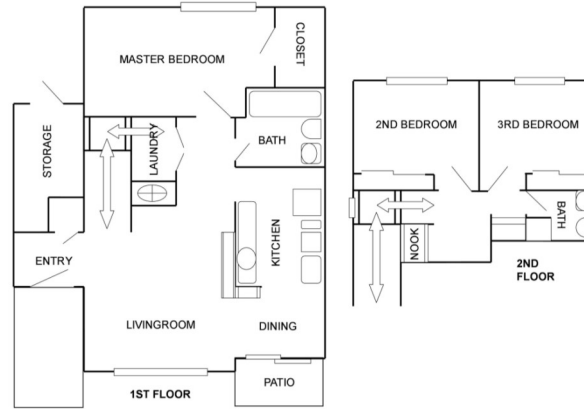
# Avalon Park Offers Affordable Luxury

We are currently accepting applications for our spacious and well cared for apartments!

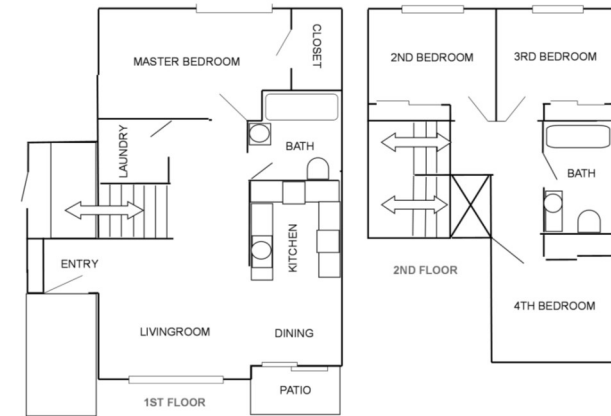
Avalon Park is a Section 42 Tax Credit Property. Applicants must apply and qualify under the Affordable Housing Guidelines. Section 8 Vouchers accepted.



**2 - Bedroom Flat Floor Plan**



**3 - Bedroom Townhouse Floor Plan**



**4 - Bedroom Townhouse Floor Plan**

## Amenities Include:

- Large Floor Plans
- Energy Star Appliances
- Self Cleaning Oven/Range
- Dishwasher
- 2 Bedrooms- Washer/Dryer in Unit
- 3 & 4 Bedroom- Washer/Dryer Hook-ups in Unit
- Laundry Facility On Site
- Community Room with Kitchenette
- Playground
- On Site Management

**Avalon Park Apartments**  
5265 Mesquite Drive  
Chubbuck, ID 83202

**P: 208-237-9113**  
**F: 208-237-9367**  
**Avalonpark@somersetpacific.com**  
**www.AvalonParkIdaho.com**  
**Facebook.com/AvalonParkIdaho**

